



The new degree of comfort.®

WATER HEATING

# SOLUTIONS

FOR EVERY USE



Residential, Commercial and Solar Products



# WHY RHEEM

## EXPERTISE

The Rheem brand promise and central message remain: The Water Heater Experts™ for decades, Rheem Water Heaters have showcased this expertise by delivering proven performance, quality and durability.

## VALUE

Rheem Water Heaters are manufactured with exceptional workmanship and top-quality materials-resulting in excellent performance, durability and efficiency.

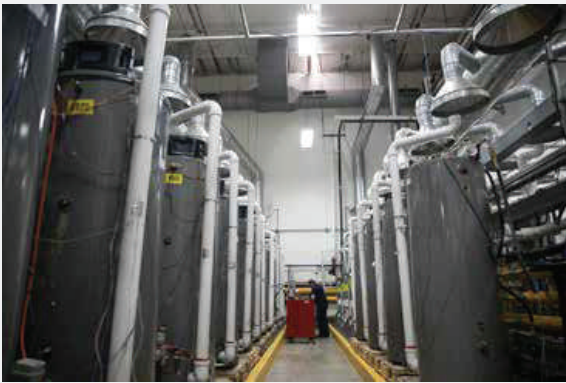
## EXCEPTIONAL PRODUCTS

The Rheem brand will continue to provide a comprehensive line of exceptional water heating products with features engineered to exceed expectations of consumers and the industry.

## SERVICE & SUPPORT

The Rheem brand is a call away with expert service and support to help provide the best water heating solutions.

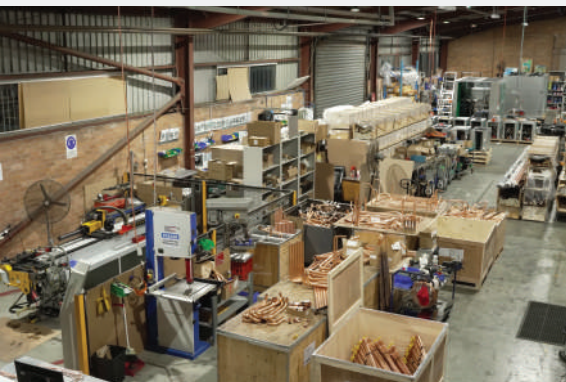
## GLOBAL MANUFACTURING



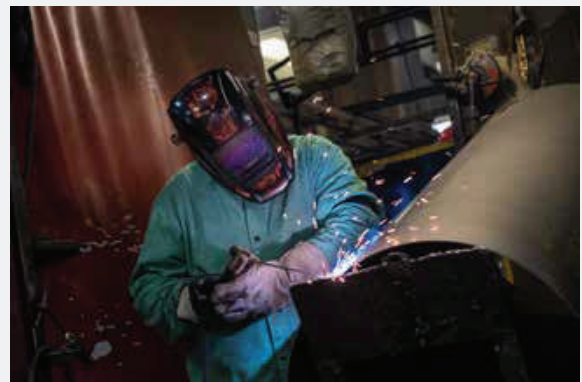
Nuevo Laredo Factory



Nuevo Laredo Factory



Australia Factory



Montgomery Factory





## A Greater Degree of Good

At Rheem, we're committed to doing good by our customers, our partners, our employees- and our planets

Here are our bold commitments towards Sustainability



### Degree of Innovation

**Our 2025 goal:** Launch a line of heating, cooling and water heating products that boast a 50% reduction in greenhouse gas footprint.



### Degree of Efficiency

**Our 2025 goal:** Reduce greenhouse gas emissions by 50% and achieve zero waste to landfill in our global manufacturing operations.



### Degree of Leadership

**Our 2025 goal:** Rheem will train 250,000 plumbers and contractors on sustainable products or sustainable installation and recycling best practices.

**DRIVEN BY**



## PHILOSOPHY



**360° Integration®**



**360° Installability®**



**360° Serviceability®**



**360° Durability™**



**360° Peace-of-Mind™**



# Why Rheem?



Nearly  
**100 YEARS**

Old American Brand



Eco Friendly Refrigerant



Over 30 Years in GCC



High Energy Efficiency  
Ratio (EER)



2 Millions+ Tons AC and  
Thousands of WH Installed in GCC



Home Automation  
& Wi-Fi Integration



360°+1 Design Philosophy



Third party / SASO Certified



Best Service Support



# W<sup>o</sup>RLD-CLASS

QUALITY FOR YOUR HOME

## 85VP SERIES

CATHODIC PROTECTION

AUTOMATIC THERMOSTAT

HIGH DENSITY INSULATION

ASME RATED T&P VALVE



1.5 TO 6.0 KW  
10 TO 30 GALLON



المواصفات السعودية  
Saudi Standards

## EP SERIES

CATHODIC PROTECTION

AUTOMATIC THERMOSTAT

HIGH DENSITY INSULATION

ASME RATED T&P VALVE

TEMPERATURE INDICATOR DIAL

POWER INDICATOR LIGHT



1.5 TO 4.5 KW  
15 TO 30 GALLON



المواصفات السعودية  
Saudi Standards

# SUPERIOR

## CENTRAL WATER HEATERS

### FURY ELECTRIC CENTRAL SERIES

EVERKLEEN™ SELF-CLEANING DEVICE

R-FOAM INSULATION

HIGH QUALITY BRASS DRAIN VALVE

OVER-TEMPERATURE PROTECTOR  
CUTS OFF POWER

AUTOMATIC THERMOSTAT

EASY INSTALLATION



الهيئة السعودية للمواصفات والمقاييس والجودة  
Saudi Standards, Metrology and Quality Org.

4.5 TO 6 KW AVAILABLE FROM  
30 TO 120 US GALLONS



CENTRAL WATER HEATERS

4.5 TO 6 KW  
AVAILABLE FROM  
30 TO 120 US GALLONS





PRESENTING RHEEM'S

# S<sup>o</sup>LAR POWERED

WATER HEATING SYSTEM

## SOLAR THERMOSYPHON SERIES

POWER SAVINGS WITH EVERY USE

ENJOY HOT WATER ALL ALONG

PROTECTION FROM HIGH-SALINITY

SUPERIOR THERMAL PERFORMANCE

LONG LASTING EVEN IN HARSH WEATHER

STURDY INSTALLATION

2 SQ M PANEL  
2.0 KW  
AVAILABLE FROM  
200 TO 300 LITRE



HEAVY DUTY ELECTRIC

# C<sup>o</sup>MMERCIAL

WATER HEATERS

## E-SERIES COMMERCIAL SERIES

98% THERMAL EFFICIENCY

FULL-FLOW FACTORY INSTALLED  
BRASS DRAIN VALVE

TEMPERATURE AND PRESSURE  
RELIEF VALVE



3.0 TO 108 KW  
AVAILABLE FROM  
50 TO 175 US GALLON

## EVR SERIES

ASME TEMPERATURE & PRESSURE  
RELIEF VALVE

FACTORY INSTALLED TEMPERATURE  
& PRESSURE GAUGES

HEATING CAPACITIES  
AVAILABLE FROM 75-450 KW

MAGNESIUM ANODE ROD



AVAILABLE IN 200-1200  
GALLON STORAGE



INTRODUCING ALL NEW

# HYBRID ELECTRIC

## WATER HEATER SERIES

**PR**  **TERRA**

**FLEXIBLE INSTALL  
FLEXIBLE SERVICE  
EASY SELL**

**SMART CONTROL FEATURES**

**CARBON FOOTPRINT REDUCTION**

**AVAILABLE IN NOMINAL 50  
AND 80 GAL TANK CAPACITIES**

**UNIFORM ENERGY FACTOR  
(UEF) OF UP TO 4**



**50 AND 80  
GALLON CAPACITIES**



المواصفات السعودية  
Saudi Standards



INTRODUCING RHEEM'S

# C<sup>o</sup>MMERCIAL

## HEAT PUMP SERIES

### A2W & W2W HEAT PUMP SERIES



Manufactured in  
Australia



Stucco Aluminium  
Finish



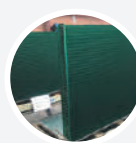
Marine Grade  
Aluminium Case



R134A Environment  
friendly refrigerant



Scroll Compressor for  
high ambient operation



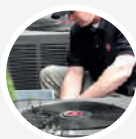
Fully dipped  
Anti-Corrosion Treatment  
to Protect Coils



Rheem® IQ  
Intelligent Controller



Double wall and  
single wall COPPER  
heat exchanger



Air-to-Water and  
Water-to-Water  
Configurations



Universal  
Flange Connections



**70 KW TO 282 KW  
WATER TO WATER HEAT PUMP**



**75 KW TO 225 KW  
AIR TO WATER HEAT PUMP**

60HZ



The new degree of comfort.



## Residential, Commercial and Solar Products

Founded in 1925, Rheem® is the only North American manufacturer delivering innovative, energy-efficient air conditioning and water heating solutions to homes and businesses in more than 70 countries worldwide. From its Atlanta Ga. Headquarters, three U.S. Manufacturing facilities, state-of-the-art distribution center and Advanced Technology Integration (ATI) Lab, Rheem® designs, builds and supplies some of the most reliable, environmentally responsible and technologically advanced products in the industry. Under the “One Rheem® Quality” promise, every Rheem® built everywhere in the world is held to the same high standard of excellence. In the Middle East, Rheem® has been present and its products have been in service for over 30 years. In fact, the company has already installed more than one million ton of airconditioning products in the Middle East region.



Donald Rheem



Richard Rheem

Discover the future of innovation and learning at Rheem's state-of-the-art **Innovation and Learning Centre** in Saudi Arabia. Visit us to experience cutting-edge technologies, collaborative spaces, and ongoing educational programs shaping the future of our industry.



*Rheem Innovation and Learning Centre, Riyadh  
Building 14, Business District, Airport Road.*

**Learn more at [Rheem-MEA.com](http://Rheem-MEA.com)**



@rheemmea



Rheem Middle East and Africa